

The latest news from Liss and Liss Forest  
Brought to you by Liss Parish Council

# VILLAGE VOICE

Issue 40 - Spring 2018

## CAN WE BORROW TO FUND THE NEW LISS PAVILION? YOUR CHANCE TO DECIDE

UPDATE ON NEIGHBOURHOOD PLAN-  
see pages 2 & 3

FULL UPDATE ON LISS PAVILION  
- see pages 4 & 5

NEW ACCESSIBLE TOILET  
AT LISS VILLAGE HALL  
- see page 6

NEW PLAY EQUIPMENT OPEN AT  
NEWMAN COLLARD- see page 7

YOUR VOTING SLIP IS INSIDE  
PLEASE COMPLETE IT AND RETURN  
TO US OR VOTE ONLINE AT  
[WWW.LISSPARISHCOUNCIL.GOV.UK](http://WWW.LISSPARISHCOUNCIL.GOV.UK)

## Dick Bowery retires



After 16 years at Liss Parish Council, our esteemed Parish Clerk, Dick Bowery, is taking his well earned retirement.

Dick has guided the council through its integration into the South Downs National Park, the Liss Neighbourhood Plan, improvement works to a number of our buildings, and of course kept a firm hand on the Parish Council's financial strategy.

All Councillors and Staff wish Dick and Jane a long and happy retirement.

## Annual Parish Meeting

The Annual Parish Meeting will be held on Wednesday 21st March 2018 at 8pm at Liss Village Hall.

This is your opportunity to hear what your Parish Council has been doing over the last 12 months and our plans going forward. You will also be able to hear from our District and County Councillors.

The Villager of the Year will also be presented with their trophy at the meeting.

## Boundary Commission Review Update



The Boundary Commission for England has extended its consultation into the ward boundaries within East Hampshire, due to major suggested changes to the original proposals in the Alton and Horndean areas. Any changes to ward boundaries will take effect from the next full East Hampshire District Council elections in May 2019.

The draft plan sees Liss Ward continue to be represented by two district councillors, but that the ward will be extended to also include Liss Forest.

A final decision on the ward boundaries is expected in early April 2018, so we will report the details of this decision in the next edition of Village Voice.

# NEIGHBOURHOOD PLAN

## Thankyou for supporting our proposed development plan

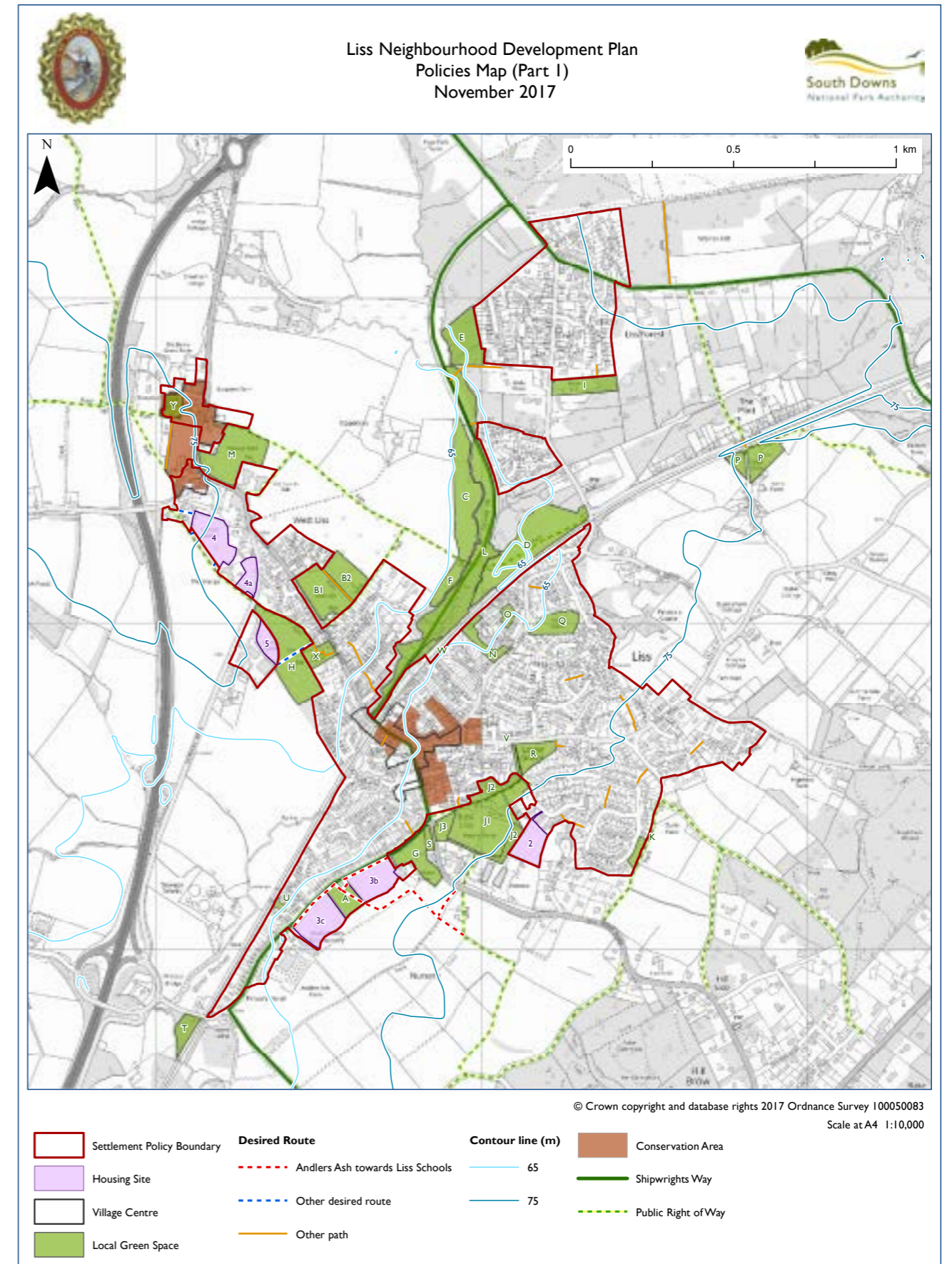
The work on the Liss Neighbourhood Plan is now finished and Liss has a working plan for the future development of the village.

**Will it make any difference?** Well, yes. For example, the plan sets out where new housing will go. Those locations were decided by the Liss community and not by the South Downs National Park Authority, and you chose to have development spread around the village and not in one place. The plan also puts a tight boundary around the village to stop it spreading into the countryside or into gaps between parts of the village such as that between Liss Forest and the rest of Liss. It has also brought in strong protection from development to most of the open areas in the village by giving them the official designation of Local Green Space.

The plan is the outcome of a huge amount of work over the past three years by volunteers from the village, supported by those commenting through the consultations and finally by supporting its adoption at the referendum. Last November 1428 people voted in the referendum and a resounding 87% percent of those voting supported the Neighbourhood Plan. As a result, the plan has been adopted by the South Downs National Park Authority and made part of the statutory Development Plan covering Liss.

The Parish Council are very grateful to Sir John Dunt, Chairman of the group steering the work, and to all its members and those of the various working groups who contributed to the plan. The village can be proud of a real community effort.

But that is not the end of it! The Parish Council now have the job of making sure the plan is carried out properly. We must hold the planning authority to account on its decisions about future development, particularly on its design. We will need to ensure that spending of money arising from the new Community Infrastructure Levy, which arises from new development, is properly spent for the benefit of the Community. And we also have unfinished business over making improvements to the village identified in the plan.



The map shown above shows the main areas in the adopted Liss Neighbourhood Plan. The development sites are Inwood Road (2), Andlers Ash Road (3b and 3c), West Liss (4 and 4a) and Brows Farm (5). The map also shows identified areas of local green space.

# IT'S DECISION TIME ON NEW LISS PAVILION - WILL YOU GIVE IT YOUR SUPPORT?



*Elevation facing the football pitch (drawings copyright Michael Weakley 2018)*

Liss is a growing village. Studies for the Liss Neighbourhood Plan and consultations with residents tell us that a new, multi-purpose facility for our community is wanted, particularly as the existing Pavilion on the West Liss Recreation ground and the adjoining Scouts Hut are in a poor state and have reached the end of their useful lives.

The Parish Council have been working to develop a new Pavilion which will meet demand from clubs and community activities as the village grows as well as providing a home for the Scouts, and facilities for the Liss Football Club, particularly the youth and junior teams.

We have held two public consultations and engaged with residents throughout the design process. In these consultations, you said that the new building should reflect a traditional sports pavilion, with a flexible, affordable design sympathetic to its surroundings and to the location of the village in the heart of the South Downs National Park.

## OUT WITH THE OLD



## IN WITH THE NEW



*Elevation facing Station Road*

We have obtained planning permission for a building which we believe reflects your views. The planning application, with all the details of the Pavilion, is SDNP/17/05105/FUL and can be viewed at [http://www.southdowns.gov.uk/planning/planning\\_applications/](http://www.southdowns.gov.uk/planning/planning_applications/)

# IT'S DECISION TIME ON NEW LISS PAVILION - WILL YOU GIVE IT YOUR SUPPORT?

## How much will the new pavilion cost?

We have received 5 tenders for building the new pavilion. These confirm that with construction costs, design and other fees the project will cost about £702,000. The fixed prices given expire in mid-May 2018.

The Parish Council have £202,000 funding secured or covered by reserves but we need to find a further £500,000. We are working on several possible sources of additional funding, including the real possibility of a grant of £100k from the Football Foundation. Also, over the next few years, money from the Community Infrastructure Levy (CIL), paid on new housing, will be available. However, none of this money is currently guaranteed.

We said previously in Village Voice, that we also intend to fund some of the cost of delivering the new pavilion through prudent borrowing from the Public Works Loan Board. This provides loans at reasonable interest rates to parish councils.

We have considered delaying the project until we have more certainty about other funding, but if we do that we can expect the price to rise. The Parish Council's view is that it is better to take decisions on the funding situation as it is now rather than wait, but work hard to bring in that additional funding.

We are therefore proposing that Liss Parish Council should take out a loan now to cover all of the outstanding £500,000. Should we be successful in sourcing further grants, donations and CIL Liss Parish Council we will use these funds to reduce the loan capital, if it makes financial sense for the village to do so.

**Without the agreement of the residents of Liss and Liss Forest to this loan to enable the Parish Council to get this long awaited project underway, it will not go ahead and the proposed new Pavilion will not be built.**

## How much will the loan cost?

We are proposing a loan paid back over 25 years, which would mean that each band D household would have about £10.99 a year added to its Council Tax to service and repay the loan. The Parish Council hopes you will support this project which provides a much needed facility for the village. The Public Works Loan Board will only lend the Council the money if we can show the local community support this project.

## What do I need to do now to show my support?

We have included a leaflet with this Village Voice for you to give us your view on our proposals. The leaflet sets out various ways in which you can respond, and we need you to do that by Monday 23 April 2018.

**PLEASE RESPOND AND LET US KNOW YOUR VIEW - YOUR VIEW COUNTS.**

Further information on the project can be found at [www.lissparishcouncil.gov.uk](http://www.lissparishcouncil.gov.uk)

If you have any questions, please don't hesitate to either email us at [clerk-smith@lissparishcouncil.gov.uk](mailto:clerk-smith@lissparishcouncil.gov.uk) or telephone us on 01730 892823

## NEW PLAY EQUIPMENT AT NEWMAN COLLARD PROVES TO BE AN INSTANT HIT



The new play equipment at Newman Collard is proving very popular with the children and young people of the village.

Providing a range of challenges and with real 'play value', the new equipment has been an instant hit.

The new equipment provides a number of play areas, including a boat, a slide, a cabin and outside of this area a new swing facility which allows the whole family to enjoy the swings together.

The play area really does have something for everyone (even some picnic benches for parents and carers to have a seat while the children play).

We know that some of you have had difficulty with the muddy path from Inwood Road to the new play equipment, so you will be very pleased to know that we have recently installed a new path of scalplings. The muddy area beside the new path will be restored to grass when weather conditions allow.

## YOUR VILLAGE NEEDS YOU!



We are extremely lucky to live in a village where there are so many activities and so many groups providing support or opportunities to enjoy sports and hobbies available.

But, all of these organisations are dependent on volunteers to be able to function.

We all live increasingly busy lives, but volunteering can provide a welcome release from the pressures of working lives, while providing opportunities to get out, meet new people and above all, build the sense of community within the village.

So whether it's helping out at the Triangle coffee bar, helping at the Crossover youth centre, helping Scout leaders or ensuring the elderly in our village receive the contact and support that they need, you can help by volunteering, even for just a couple of hours per month.

## NEW VILLAGE HALL ACCESSIBLE TOILET



We have recently opened an accessible toilet at Liss Village Hall.

Aware that neither the gentlemen's or ladies' toilet at the village hall were accessible to those with mobility problems, the Parish Council decided to construct a new accessible toilet at the rear of the village hall.

The new accessible toilet also provides another much requested facility, a baby changing facility.

Access to the toilet is via the door to the right of the stage in the main hall, and the room is suitable for those on their own or a disabled person with their carer.

We hope that these new facilities prove useful to hirers of the village hall.



## SPIRIT OF MUSIC 2018

The Spirit of Music Festival returns from 28th April until 6th May 2018

Now in its fifth year, The Spirit of Music Festival 2018 provides an exciting and diverse programme which, as always, builds on strong local talent, joining forces with inspiring guest performers. It offers many opportunities for everyone — adults and children — to get involved in workshops led by experts.

The festival theme for this year is 'HOME' — a place of comfort and refuge, of welcome and of memories, and their choice of music represents both the English and European heritage of chamber and choral-orchestral music, and folk elements from other ethnic cultures, including Syrian, Yiddish and Gypsy tunes. Everyone is welcome to this great line-up of events.

The Festival has a total of ten concerts or workshops across Petersfield, Liss and Greatham.

The events in Liss are:

Sunday 29th April, 4pm: ZRI Workshop  
St Mary's Church, Liss

Sunday 29th April, 6pm: ZRI Cellar Sessions  
St Mary's Church, Liss

Saturday 5th May, 10am-12noon Childrens' String Workshop - St Mary's Church, Liss

Sunday 6th May, 3:30pm: Family Concert by the SouthDowns Camerata and Young SouthDowns Strings - St Mary's Church, Liss

Find out more at [www.spiritofmusicfestival.org.uk](http://www.spiritofmusicfestival.org.uk)  
Tickets for all events available online via the website or from the Triangle Centre.

## CLEAN UP AFTER YOUR DOG

We have many areas within Liss and Liss Forest where dog owners can walk their dog. We want to encourage dog walking, but please walk your dog responsibly - pick up its poo in a bag and take the bag home with you or put it in one of the bins provided. Please do not just leave your full poo bag hanging from a branch or laying on the ground.

## FLOOD ACTION GROUP



As the Liss Flood Action Group reaches its 3rd anniversary, it is calling for more volunteers to continue its work.

"We have established an Emergency Plan" said chairman Cllr Mike Kendall "and are refining it with help from Hampshire County Council, Hants Fire and Rescue and East Hampshire District Council officers. We need more volunteers to replace those who have moved away, or who have had to give priority to family and work commitments."

The Group needs volunteers:

- to act as Flood Wardens, keeping a lookout for potential blockages of the River Rother and culverts, ditches and tributaries flowing into the river or
- to deputise for others
- to take part in periodic riverside walks
- to help refine its Emergency Plan and take part in emergency exercises
- to contribute to discussions about future flood prevention works.

The long-term aim of the Group is to establish a series of small-scale natural or 'soft' flood prevention or mitigation measures with the help of the Environment Agency.

"We are getting strong support from the Environment Agency whose consultants are expected to give a preliminary assessment of the viability of works in Liss, by the end of March this year." Cllr Kendall added "They are saying at this stage that Liss can hope for £500,000 towards the cost of works in the 2021/27 programme, and perhaps earlier. Liss Parish Council is bidding for £300,000 towards that in its schedule of schemes to be funded by new housing development in Liss. So we are making real progress."

If you are interested in helping the Group in any way, please contact the Liss Flood Action Group via [admin@lissparishcouncil.gov.uk](mailto:admin@lissparishcouncil.gov.uk)

# LISS PARISH COUNCIL CALENDAR OF MEETINGS

2018 MEETING DATES	MAR	APR	MAY	JUN	JUL	AUG	SEP	OCT	NOV	DEC
COUNCIL - 7.30pm	19	16	21	18	16		17	15	19	17
PLANNING - 7.30pm	26	30	30	25	23	29	24	29	26	19
HIGHWAYS - 7.30pm		4			2			8		
BUILDINGS - 7.00pm	5			11			10			10
GROUNDSDS - 7.45pm	5			11			10			10
FINANCE - 7.30pm		9			9				5	
LISS PAVILLION DEVELOPMENT COMMITTEE - 7.00pm	12	23		4	30		3	22		3

All meetings are open to the public to attend. If you wish to do so, you will be very welcome



**We currently have a vacancy for a Parish Councillor**

If you are interested in joining us, please pop into the Parish Office (behind the Village Hall) or call 01730 892823 for more information.

Parish Councillors are unpaid, but the role is very interesting and rewarding.



## SAVE THE TEMPLE INN

The Parish Council (working with the Save Our Temple Inn group) have successfully registered the Temple Inn as an Asset of Community Value.

Red Mist Leisure are continuing in their advanced negotiations with Fullers Brewery (the current owners of the Temple) and are optimistic that they will be able to begin refurbishment of the Temple Inn in the Spring of 2018 with the aim of having this great local pub re-opened in time for Easter.

## WORDSEARCH

```

A B S U T P Z S B S Y D K N U
P C C R A U E B Z O R X F A S
T K T R E Q W P P A R F H L Q
G I I B E F Z L S T U O C S
Y S R R O U T L C O U N C I L
H T H I N N O N A W I N D V P
A D F J P C P A U V Z W O G L
I N C V W S M E J L F W O N A
Y O P Y N V P R W R O Q L E Y
K I L W M U S I C O P V F W I
Z L G L O C A N B L Q T K M N
H I I R C L L P M Q B P G A I
E V G S S R Y V R D V W W N A
W A R U S N B L U A I I C I V
C P G P D I B Z W W O G D Z M
    
```

Can you find these words in the grid above?  
**ACTION COLLARD COUNCIL FLOOD FUN  
 GROUP LISS MUSIC NEWMAN PARISH  
 PAVILION PLAY SCOUTS SPIRIT VOLUNTEERS**

## Contact Us

Parish Council Telephone: 01730 892823  
 Sarah Smith, Parish Clerk:  
[clerk-smith@lissparishcouncil.gov.uk](mailto:clerk-smith@lissparishcouncil.gov.uk)  
 Jan Allen, Responsible Finance Officer:  
[rfo@lissparishcouncil.gov.uk](mailto:rfo@lissparishcouncil.gov.uk)  
 Frances Cook, Administrative Officer:  
[admin@lissparishcouncil.gov.uk](mailto:admin@lissparishcouncil.gov.uk)  
 or call in to our office behind the Village Hall:  
 Office open Monday, Wednesday and Thursday  
 10am - 2pm