

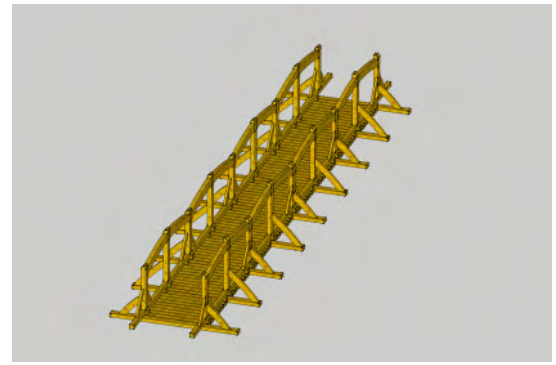
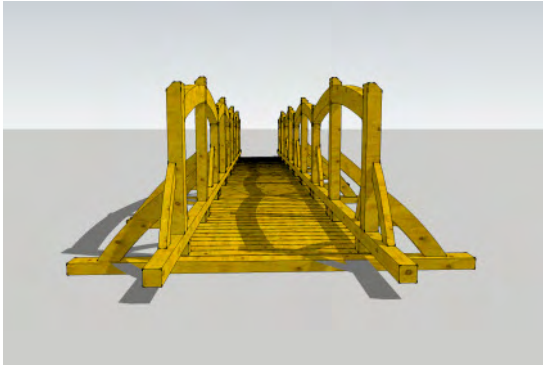
LISS



Liss Riverside Railway Walk – Project to refurbish the 3 wooden footbridges

The Rose, Nightingale and Briggs bridges situated along this walk and nature reserve are to be replaced using green oak and traditional carpentry/woodcraft skills. The bridges as shown below will be built over a period of 2 years and the funding for this project has been provided by South East England Development Agency (SEEDA), the Sustainable Development Fund administered by the South Downs Joint Committee and EHDC. Rose Bridge named in honour of botanist and Liss resident Dr Francis Rose who was a keen supporter of the Liss Conservation Volunteers (now Liss Rangers) is the first to be replaced and the work should be underway during January and completed before the end of February 2010. The 2nd bridge will be opened on 1st April 2011 to coincide with the official launch of the South Downs National Park and the 3rd replacement bridge will be opened before the end of March 2012.

Please note that the colour of the bridges shown will weather very quickly to a slate grey colour.



Entrance Enhancement

In early November major work commenced to enhance the gateway to the walk, by way of a combined contractor and community service project overseen by Tony Grant at the request of LPC. This work has been enabled by funding from LPC, HCC & EHDC and has been designed to improve the look of and access to the Riverside Walk, the most popular area of our village. The entrance has been opened up, a new signpost and litter receptacle erected, the pathway and drainage improved and a new hedge planted. It is hoped the work will be completed by early springtime with the installation of a new bench and renovation of existing ones, relocation of the information board and the new planters filled with hardy shrubs.

Work is already underway to apply for further funding to enable the remaining section of the LPC owned part of the walk (from the platform to the picnic area) to be improved. Ideas for improvements to this part of the walk are welcome from local residents and suggestions should be made in writing to the Parish Office.



VOICE

The Newsletter of
Liss
Parish Council

No 27
02/2010

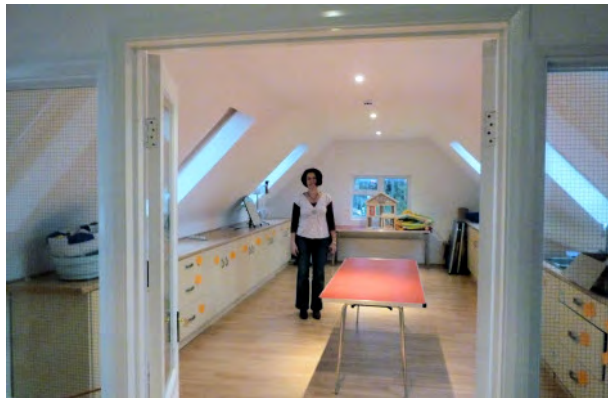
Crossover Youth Drop In Centre

The Crossover Centre is now into its fourth successful year of giving the young people of Liss somewhere safe to hang out in the evening. The addition of an additional loft studio upstairs, which in the day houses the Hillside Children's Centre and Connexions Advice service for teenagers, and in the evenings and weekends, becomes a loft art studio for use by the young people, particularly during the successful monthly young men and young women only nights means that Crossover truly can be seen as going from strength to strength.

However, in order to keep up this good work there is urgent need for more adult volunteers, both to help run the daily sessions and also to help keep the centre clean. Could you spare a couple of hours a month (or a week or fortnight) to volunteer on a Tuesday, Wednesday or Thursday night – supervising young people aged between 10 and 17 years old? Reliability is key! Would you be able to give a couple of

mornings a month to help keep Crossover pristine? The Young People are, on the whole, a pleasure to work with and many of our volunteers have an enjoyable time. It is a great way to meet other adults in the village too. Call the office for a volunteer form. (Please note, volunteering is subject to a satisfactory CRB check being undertaken by us.)

In order to continue raising money for the Centre, which is a Charity and in need of constant funds, we will be holding our now annual Race Night on Saturday 20th March. Last year's Race Night was a great success and a lot of fun! There were horse races to place modest bets on and a really delicious dinner, not to mention a bar and a great atmosphere. This year there will be a raffle too. Any adults are welcome to buy tickets and come along. The meal is included in the price. Tickets are limited so get yours early to avoid disappointment. For more information on any of the above ring Rachel or Sue on 892981 or email crossover@btconnect.com



The Loft used by the Crossover, Hillside Children's Centre, and Connections Advice service for teenagers.

2009 Christmas Fair

The evening of December 9th was clear, warm, and dry with no wind – perfect conditions for the Liss Christmas Fair. Large numbers of residents of all ages joined in the fun with the atmosphere set by the two fine Christmas trees kindly donated by Harris Caravans. Once again we were delighted to have Liss Band, St. Mary's choir and the children of Liss Junior School providing music to bring alive the spirit of Christmas. For the children, Father Christmas's grotto was in Alice Blue, fairground rides were in the Whistle Stop car park and there were model trains running in the village hall. For everyone, eating and drinking opportunities abounded in the shops and from the many stalls in the street. The Community Centre was packed with people taking the opportunity to stock up early on Christmas gifts from a wide variety of craft stalls. So very many local organisations and businesses contributed to the success of the evening that it is quite impossible to mention each one by name – but on behalf of all Liss residents we say a massive "Thank You" to everyone who helped to provide the whole community with such an enjoyable evening.

Some of the Shopkeepers who opened their doors Christmas Fair 2009



LUPIN (Liss unites people in need)

(Liss and district voluntary care group 01730 892572)

We are a group of villagers who provide a service to people in our lovely community who need help which they can't get for some reason or other from their immediate family, friends or neighbours.

Mostly we provide transport to doctors, dentists, hospitals, opticians and a random selection of other miscellaneous need!

It is a very much appreciated service judging by the heart-warming comments we receive and it is, increasingly, a much used service.

We are very grateful to the people who use our service and the contributions towards fuel costs they give, also for grants and personal financial donations we receive from time to time.

Our most urgent need at the moment is for more volunteer drivers.

Please help us by volunteering; first step phone the number above.

Stagecoach 37 bus service to Petersfield and Havant.

From early March we will be getting new buses on this route. The current ageing fleet of double deckers are at last to be replaced by newer low floor double-deckers which are currently being used on the 700 route from Portsmouth-Brighton.

The new buses have lower floors which will make getting on and off the bus easier for those of us who are not as mobile as we used to be. They also have a step free ground floor and a ramp to allow wheelchair users on to the bus and to allow easier access for those with babies in pushchairs. They are also lighter and airier than the old buses, and being much newer should have improved reliability.

However, the lower floor and ramp can only be used if the bus can access the bus stop! So we would ask all car drivers to please be considerate and to cease parking in either the bus bay outside of Tesco, or on the bus stop opposite. Not only is parking on the bus stop an offence, it removes the benefit of the new buses. It has taken many years to get modern accessible buses transferred to this route, so let's not risk losing them through inconsiderate car parking.

Annual Parish Meeting

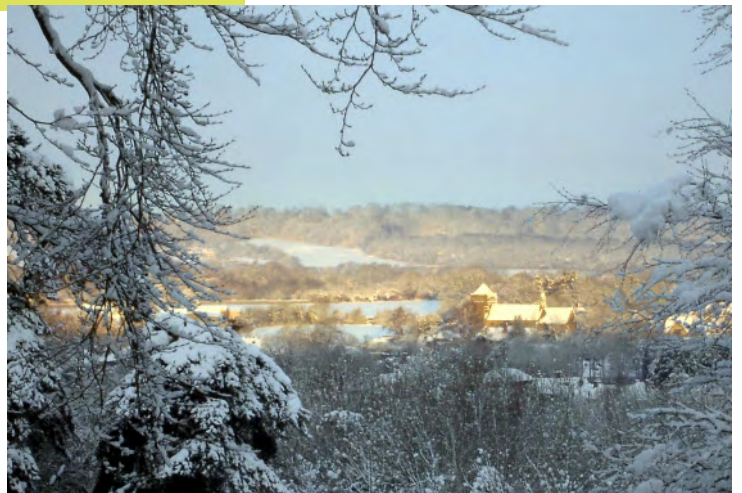
8.0pm on Wednesday
17th March
in Liss Village Hall

Diary Dates 2010

The Village Day is to be held on Saturday 22nd May

Christmas Fair 2010

Plans are already taking shape for this year – so please put **Wednesday, 8th December** into your 2010 diaries now. Also, on Friday, 3rd December we intend to repeat the enjoyable and well attended carol singing to celebrate the lighting of our two village Christmas Trees. If you have any suggestions or would like to be more involved we should like to hear from you. Please contact Liss Community Association, Liss Parish or Jade News



The George Street Trust

George Street was one of the driving forces behind the building of St Lukes Milland & Rake and the Rake Village Church of England School at the end of the 19th century. Another of his lasting legacies is the George Street Trust, which via the Trustees originally provided assistance to those in need, who lived in either the hamlet of Rake or the ecclesiastical parish of St Lukes Milland and Rake.

In 2007 the area of benefit was expanded to encompass the civil parishes of Liss, Milland and Rogate and the full benefice of Milland & Rake and Linch with Iping Marsh.

Some of the grants are regular (annual) gifts; others are ad hoc and based on new requests or identified need. In recent years grants have been given to people in various forms of "need and hardship", and to support the youth of the area; both individuals and clubs, and used for the development of facilities.

The Chairman of the Trustees is Canon J A L Hulbert, and other trustees include representatives of the parishes of Liss and Rogate, and the community in Rake. Anyone who would like to know more about the George Street Trust or may wish to make an application, please contact Michael Payne (01730 895431), Bob Ireland (01428 713392), or the Chairman of the Trustees (01428 741285).

New Councillors



Keith Budden

As a familiar face in the village (many of you probably know him as the 'big guy who walks with a stick!' or "Roger's brother"). He has lived in the Liss and Petersfield area for most of the last 30 years.

Keith first became interested in local issues when the idea of a skatebowl was first raised a number of years ago, but believes he has much to add to the Council across a wide range of topics including planning, transport and . Having survived a long battle with cancer, he now runs his own Internet development company operating a number of successful websites.

His partner passed away four years ago and although Keith has no children of his own, he has regular contact with his partner's children and grandchildren, who all live in Petersfield.

Keith is a keen Formula 1 fan and enjoys walking in the wonderful countryside that surrounds us here in Liss.



Stuart Rees

Stuart was born in Cardiff in the early 1950s and brought up in Caerphilly in South Wales. He came to Hampshire to begin his teaching career in September 1974. He has lived and worked in Hampshire ever since.

In 1979 Stuart suffered a spinal cord injury when he was involved in a head-on tackle in a rugby match. He has been a wheelchair user ever since but has led, and still leads a full and active life.

Stuart's personal interests these days include live theatre, supporting rugby, sailing, skiing, gliding, exploring the country side (within obvious limits) and he is about to try scuba diving.

Having retired from full time employment in education, he would now like to become involved with and to make some sort of contribution to his local community and hopes that becoming involved with Liss Parish Council will be a way of achieving this.



Angela Wright

Angela is married and has lived with her husband Graham in Liss Forest for 15 years. Having spent her working life in banking and the City she gave up the daily commute into London and now volunteers for the local Citizens Advice Bureau.

One of the things she values most about living in Liss is the strong community spirit. She hopes she can contribute to helping Liss remain a sustainable community with facilities for all ages, developed in line with the wishes of the community.

Her main interest is in wildlife, particularly birds, and she is often to be found bird watching on Longmoor or along the Riverside Walk. She is keen to ensure that the wild and special places of Liss continue to be protected as the community grows.

The recent picturesque snowy conditions proved a trial to all of us, but we would like to express our appreciation to all of our highly valued local shops and businesses who have pulled out all the stops to assist residents, and keep us supplied with the basics. Thanks are also extended to many within the community who have been good neighbours. Without this community spirit and involvement many people would have struggled even more.

Parish Council Meetings 2010

	Time	Mar	Apl	May	June
Council	7.30pm	15th	19th	17th	21st
Planning	7.30pm	8th	6th	5th	1st&28th
Highways	7.30pm		26th		
Buildings	7.00pm	1st			7th
Grounds	7.45pm	1st			7th
Finance	7.30pm			10th	
Annual Parish Meeting	8.00pm	17th			

The Village Voice is written, edited, produced, published and delivered by Parish Councillors in order to keep the citizens of Liss informed of the actions of their elected representatives.

Contacts:

Dick Bowery,
Parish Clerk
Phone & Fax 01730 892823
E-mail: lissparish@aol.com
Administrative Officer:
Andrea Mann
E-mail: lisscouncil@aol.com
Website www.lissparishcouncil.gov.uk