

COMMUNITY CONSULTATION

Proposed measures to improve safety and street scene on Hill Brow Road, outside Liss Infants and Junior Schools



Liss Parish Council have been working with **Liss Infants and Junior School, Hampshire County Council** and **South Downs National Park Authority** to develop a set of proposals to make improvements around the school area of Hill Brow Road.

We propose to use **Section 106 Grants (“S106”)** to fund these improvements. S106 is the money raised from developers contributions when new houses are built.

S106 grants can only be spent on capital projects that provide new or improved community or social infrastructure, where a new development has, at least in part, contributed to the demand for the project. S106 cannot be used for on-going running or maintenance costs (e.g. pot holes).

Where: area of Hill Brow Road around the Liss Infants and Junior School

Projects aims:

1. Establish a safer and cleaner environment to walk or ‘Park & Stride’ to school
2. Reduce traffic speeds and illegal parking, whilst aiding flow of traffic, around the school site
3. Create a strong sense of place with a more sympathetic street scene and clear ‘School Zone’ identity

Proposal for Phase 1 – Autumn 2021:

- ✓ Village Gateway to be sited so it’s visible to drivers heading into the village: Helping to create a ‘sense of place’ and allowing the school zone to be identified easily
- ✓ Remove the centre line from the road: Reducing drivers feeling of having a ‘designated space’ in the road to drive and shown to slow traffic
- ✓ Replace verge markers with low level bushes on both side of the highway: Helping create a better street scene whilst maintaining a parking barrier (see phase 2 below)
- ✓ Install a new footway: Allowing safer passage on the schools one-way system
- ✓ Consolidate “No Entry” road signs: Reducing clutter and improving street scene
- ✓ Add Double Yellow Lines on school site (subject to the Traffic Regulation Order legal process): Preventing dangerous parking and helping traffic flow around the school

Proposal for Phase 2 – 2022:

- ✓ Relocate the new crossing from the Andlers Wood development
- ✓ Remove wooden posts once low level bushes are sufficient height to be an effective parking barrier, some strategic posts may still be required

We would love to hear what you think of these proposals, and any questions you may have.

Please complete the short questionnaire overleaf and return to Liss Parish Council by 20/05/21:

- ✓ **Council Offices, Hill Brow Road, GU33 7LY**
- ✓ **Scan or photograph the form and send to:**
 - **assistantclerk@lissparishcouncil.gov.uk**
 - **Facebook – Liss Parish Council**

We value your privacy, data collated in this questionnaire will only be used to inform this project, no personal data will be passed on to third-parties. Liss Parish Council Privacy Policy can be found at www.lissparishcouncil.gov.uk

Questionnaire: *Please tick relevant box*

1. Your information:

	Yes	No
Do you live in Liss?		
Do you live on or just off Hill Brow Road close to the schools?		
Does anyone in your household attend Liss school?		

2. How important do you think the following considerations are for the proposal?

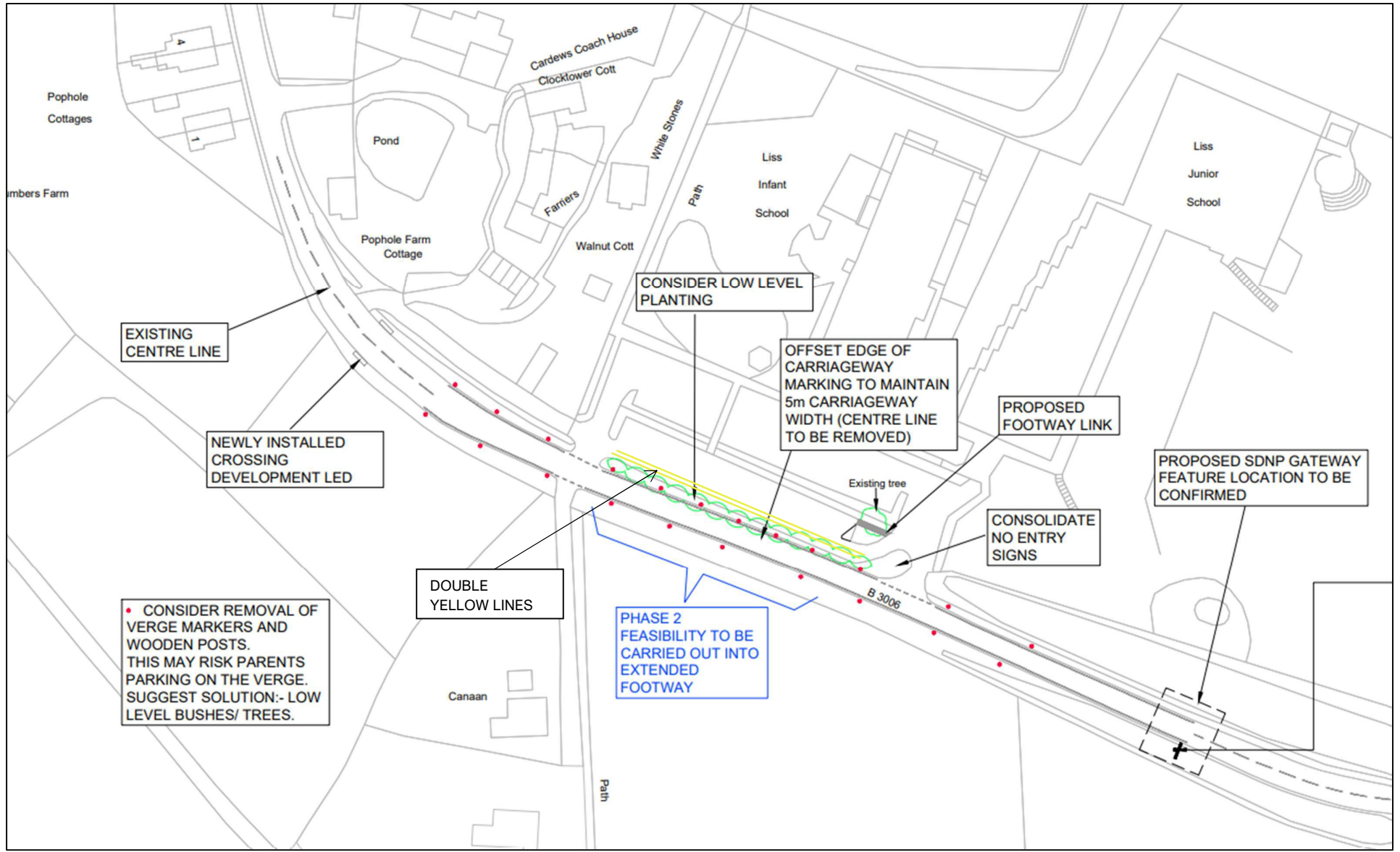
	Very Important	Important	Not Important	No Opinion
Reduced traffic speed				
Fewer cars parked dangerously				
Fewer cars idling				
Improved air quality				
Safer to walk or 'Park & Stride' to school				
Improved one-way system at school				
Better flow of traffic				
Improved street scene				
Improved crossing from Andlers Wood				
Greater sense of place				

3. How important are the following items of the proposal to you?

	Very Important	Important	Not Important	No Opinion
Village Gateway				
Remove roads centre line				
Replace verge markers with low bushes				
Install a new footway on school site				
Consolidate "No Entry" road signs				
Double Yellow Lines on school site				
Relocate new Andlers Wood crossing				
Remove posts once bushes established				

4. Please use this space to make any comments you may have on the proposal or items you think should be included? *Continue on a separate sheet if necessary*

Proposed Plan for improved street scene measures on Hill Brow Road, outside Liss Infants and Junior Schools.



Example of a Village Gateway Design

