

# LISS



# V

## **Village Design Statement**

The Liss Village Plan and Design Partnership are updating this document which was first produced in 2000 and doesn't meet the standard required for adoption by the Planning Authority - the South Downs National Park. We are currently editing and illustrating this document and hope to have it ready for submission by the end of the year.

# I

Please go to the Liss Village Plan and Design Partnership page on the LPC website for updates on the VDS and Parish Plan.

# L

## **Liss Christmas Fair - Wednesday 5th December 6.00pm**

As in previous years, this much loved annual event with the help of the traders in Liss and others will be taking place in Station Road with Liss Band and Choirs providing seasonal music to bring alive the spirit of Christmas, whilst Santa will be in his Christmas Grotto at the Whistle Stop family room.

For all those wishing to take part by having a stall in Station Road or providing entertainment please contact Jade News or Kevin Johnson at the Flooring shop on 891123 or 07958728122, or e-mail [info@onallfloors-liss.co.uk](mailto:info@onallfloors-liss.co.uk)

# L

The Triangle Centre will be hosting its extensive array of craft stalls and serving mulled wine and mince pies - for more information please contact Sara Kneller at the Triangle on 301000.

# A

## **New bus stop and designated parking bays outside Tesco**

The project to remodel the bus bay outside Tesco is now complete. Due to persistent misuse of the old bus bay for illicit parking, Liss Parish Council consulted with HCC Highways and our local Police beat Officer, and Hampshire Highways suggested re-engineering the bus bay to provide an on-road bus stop for safer pedestrian access to buses and to provide short stay parking spaces. Two parking spaces have been created with a 15 minute maximum stay, in line with the spaces on Station Road. One disabled space has also been created. LPC has been advised that the parking regulations will be strictly enforced.

# G

## **Hampshire broadband programme**

This is under the remit of HCC. By using £5 million of government funding matched by Hampshire County Council and district council partners the vision is to provide superfast broadband of 24Mbps (Megabits per second) to 90% of homes and businesses in Hampshire by 2015, with everyone else having access to standard broadband of at least 2Mbps. They are launching a renewed sign up campaign as evidence of high demand may encourage the commercial companies to invest more money in the network infrastructure, and it will also help their funding to go further so ensuring that faster broadband reaches more people. Find out more at [www.hants.gov.uk/broadband](http://www.hants.gov.uk/broadband)

# E

## **Horse Chestnut Tree - action to lengthen its life**

Our much loved "conker" tree in the Newman Collard Centenary Gardens is ailing due to Bleeding Canker, Leaf Blotch and Leaf Miner. To try and lengthen the tree's life we will be aerating the soil around the tree to reduce the soil compaction, raking up the leaves in which the fungi and leaf miner over winter, and leaving the grass under the canopy to grow longer next summer. All these measures are to improve the tree's rooting area, and it would greatly help the tree if villagers kept clear of this grassed area under the tree to reduce the soil compaction.

# VOICE

The Newsletter of

Liss

Parish Council

No 33

10/2012

## SDNP Walk Leaflets

With funding from the South Down National Park Sustainable Communities Fund some LPC Cllrs and others have produced a set of 10 walk leaflets presented in a plastic wallet - available for purchase at £3.50 from the Parish Office, and to accord with sustainability they will also be down loadable from our LPC website. The walks vary in length and terrain covered, start in Liss and finish either back in Liss or at locations where there are bus or train services. The routes encompass Hawkley, Liphook, Petersfield, Rogate and Selborne with some shorter walks just circling Liss village. The set of 10 walks allows you to explore the environs of Liss and to travel further afield by linking up with other long distance walks.



## Riverside Railway Walk “White” Bridge Refurbishment

For those who may be newcomers to the Village, the wooden footbridge that uses the old “White Bridge” concrete and metal base was installed during the summer, and has been praised by many. The aesthetically pleasing curvature has been retained, and the construction reflects that of the other 3 bridges along the Riverside Walk (Rose, Nightingale and Briggs).

## The Shipwrights Way

This is a new long distance path which will eventually link Alice Holt forest to the sea at Portsmouth and is being completed stretch by stretch. The section between Liphook and Liss has now been way marked and part of the route is along the Riverside Railway Walk . Go to [www.hants.gov.uk/shipwrights](http://www.hants.gov.uk/shipwrights) for more information.

## Date for your Diary - Village Day - Saturday 8th June 2013

The 2013 Village Day is being organised by the Newman Collard Playing Fields Trust. Please contact Dorothy Collard on 893131 or by e-mail [dorothycollard@hotmail.co.uk](mailto:dorothycollard@hotmail.co.uk) if you would like to participate, have a stall, or can offer to help.

## New powers to fine irresponsible dog owners

Liss Parish Council now has the authorisation to hand out fixed penalty notices to dog owners who fail to pick up their dog's waste. Only the LPC Groundsman can issue the £50 fines, and this can only be done during his working hours and within the Parish boundary. Areas of particular concern are the playing fields especially Newman Collard, the Railway Walk, and public footpaths such as the one connecting Hill Brow Road to Stodham Lane through Hilliers tree nursery. It is an offence under the Dogs (Fouling of Land) Act 1996 not to clear up **immediately** after your dog has fouled on all land, both public and private, to which the public has access. These areas include:

- \* highways (including private roads) and footways
- \* open spaces
- \* playing fields / public parks / play areas
- \* housing amenity greens
- \* public footpaths, bridleways and adjoining verges.

Dog fouling in public areas is anti-social, it is unpleasant to look at, smells, attracts flies and is associated with a number of diseases. There are special bins provided in the village recreation grounds and at other locations, but any bin will do. Leaving a bag of dog waste on the ground is still an offence. Please help us achieve our aim to eradicate dog fouling by being a responsible dog owner, so everyone can enjoy the surroundings in Liss.

## Hitting the Cold Spots - helping you stay warm in Hampshire

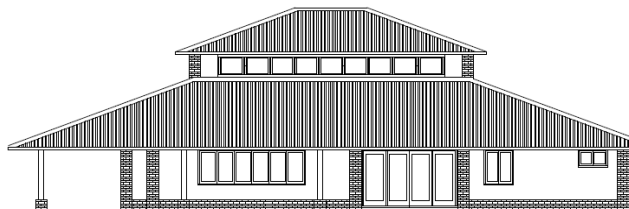
This is a Hampshire County Council scheme funded by the Dept of Health, which can help and advise you on ways to keep warm and healthy this winter. They are offering \*:

- **Grants** for **heating** and hot water system **repairs**
- **Urgent** support with **alternative heating measures** (electric oil filled radiators) if you are without heating
- **Small grant** support to cope with winter fuel emergencies
- **Carbon monoxide detectors** - provided free with a home safety visit
- **Tariff** change advice to help you save money on your fuel bills, and practical support and assistance with debt, money and benefits
- Access to **free loft and cavity wall insulation**, including for solid wall properties
- Free assessment for connection to **mains gas supply**.

For free and in-depth advice, please contact the Environment Centre office on 0800 804 8601 or e-mail [staywarm@environmentcentre.com](mailto:staywarm@environmentcentre.com) Services available until 31 March 2013.

\* some of the above services and emergency relief are subject to availability and conditions apply.

## A New Pavilion at West Liss Recreation Ground



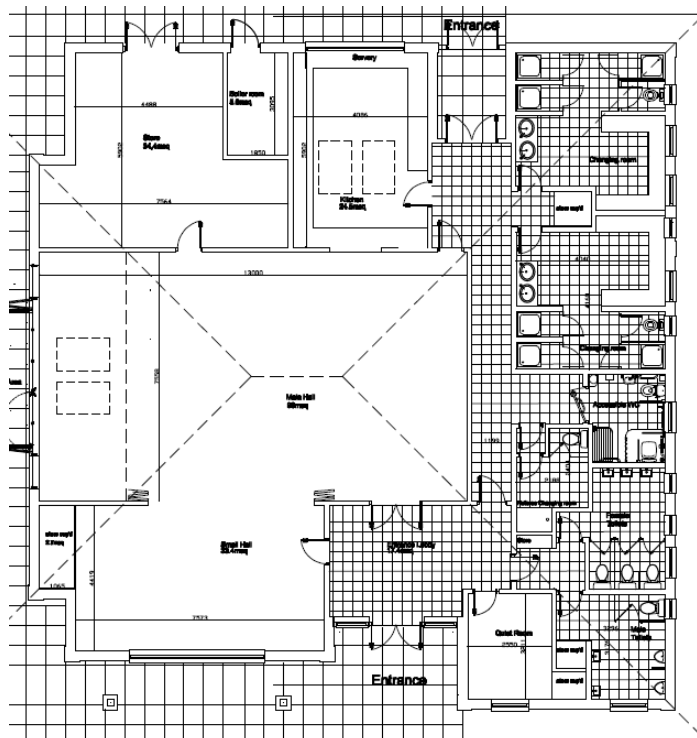
Logo designed by Jools Woodhouse

### Plans

The final drawings and documents for planning application were approved for submission by Liss Parish Council on 9th June. The application was actually made in July. South Downs National Park Authority Planning Department have considered the application and, having taken into account comments received, have made two recommendations and requested a re-submission encompassing these points. This will have been submitted by the end of September.

With regard to the final design, the method of construction will be a traditional masonry build.

Fundraising is well under way with many local events and we are grateful for your support. Applications to major funding organisations are in progress but cannot be progressed until we obtain full planning approval.



## **SCHEDULE OF PLANNED FUNDRAISING EVENTS**

**MODEL RAILWAYS EXHIBITION - 3pm to 8pm 2nd November, Liss Village Hall**

*Do you have an interest in Model Railways?*

*Join Liss Model Railways Group on their Open Day*

**JUMBLE SALE (organised by 3<sup>rd</sup> Liss Brownies) - 3rd November, Liss Village Hall**

*The Jumble Sale will run from 10am - 12pm*

*Donations of any good ladies, men's and children's clothes and shoes, books, Bric-a-brac and toys*

*There will be a small number of tables available to rent for £5 for people who would like to sell their own items.*

*For information about donating, helping on the day or our fundraising\* please call Jools Woodhouse on 01730 300277*

**COMEDY NIGHT - 10th November, Liss Village Hall**

*An evening of mirth and merriment from 4 comedians, including:*

*Iszi Lawrence, fresh from her award winning Edinburgh Fringe performance*

*Colin Manford, as seen on BBC tv and in 9 out of 10 cats*

*Supported by two local acts, Christian Elderfield & Guy Manners*

*Liss Village Hall - doors/licensed bar open at 7pm, Acts begin at 8pm*

*Tickets £8 (over 16s only) from Jade News, LPC Office, or on the door*

**See Overleaf HOW YOU CAN HELP .....**

\* The Brownies are raising funds for the new West Liss Pavilion which they would use for their meetings. They have so far raised £800 by having stalls, recycling ink jet cartridges, and through the Local Veg Box people who kindly donate 10% of their sales to them.



## HOW YOU CAN HELP?

1. Buy-a-brick from LPC at £5.00 each.
2. Individual or corporate cash Donation.
3. Donation of Goods or Services.
4. Show your support by helping local community groups to raise funds for this project.

NAMES OF ALL DONORS WILL BE DISPLAYED WITHIN THE NEW BUILDING.

Please speak to Liss Parish Council to understand how you can help or make a contribution to this exciting community project.

Please ensure your details are registered when making any donation.

Should this project be unsuccessful for any unforeseen reason, any unused donation of £5 or over will be returned.

**YOUR DETAILS:** NAME: ..... E-MAIL .....

ADDRESS: ..... POSTCODE: .....

**DONATION:** .....

**BUY A BRICK QUANTITY:** .....

This charity: Liss Recreation Ground No. 301871 is registered to receive Gift Aid donations and can reclaim the basic rate of income tax that is paid on certain donations received from individuals.

Please tick if you are a UK taxpayer & wish your donation to be treated as a Gift Aid donation .....

## Allotments

As a result of this year's appalling growing season it is anticipated that a number of plots will become available at the end of the year, when tenants are asked to complete their 2013 agreements. The allotment sites are located in Rake Road, Mill Road, alongside the Riverside Railway Walk, at either end of Andler's Ash Road, and in Duckmead Lane. To encourage all our allotment holders in their endeavours, the allotments are judged annually on behalf of LPC and awards are given to the Best Plots and Best Newcomer, with certificates for those plots which are highly commended. The winners are announced at the Liss Horticultural Show in August. Please contact the Parish Office for information on becoming an allotment holder, or visit the parish website.

## Could you spare a few hours a month to help your village?

We currently have vacancies for two new Parish Councillors. We get involved in all sorts of activities from running the Village Hall, arranging the maintenance of the playing fields and recreational areas around the village, maintaining parts of the Riverside Railway Walk, organising fundraising events for our project to replace West Liss Pavilion and even getting into the river to capture plastic ducks! Of course we have a serious side too which includes making grants to local groups, consulting on planning applications, working with HCC and EHDC and hopefully making the right decisions to make the parish a pleasant and desirable place to live. So if you feel you might have what it takes, have some free time and would like to get involved, please contact me on 01730 895848 or our clerk, Dick Bowery on 01730 892823 for more information. Howard Linsley, Chairman, LPC.

## Village Hall refurbishments

The long awaited refurbishment of the Gentlemen's toilets in the village hall has now been completed with the installation of all new sanitary ware, a pedestal basin with safety mixer tap, chrome pipework, and new white tiles. The Ladies have also benefited from a new white vanity unit incorporating a bowl with safety mixer tap.

## Please help.....

We are asking for help with the delivery of your Village Voice. Ideally we would like to have a representative for each of the village roads and streets (the longer ones can be shared between two or more). We issue two editions a year (Spring and Autumn) and by delivering it to each home we ensure that those who cannot access the LPC website are kept informed. If you are able to volunteer for these two deliveries a year in your road/street please contact Gina Logan on 893690 ginaklogan@aol.com or the Parish Office. Many thanks.

## Parish Council Meetings 2012

	Time	Oct	Nov	Dec	2013 Jan	Feb	Mar	Apr
Council	7.30pm	15	19	17	21	18	18	15
Planning	7.30pm	8	5	3	7	4	4	2
Highways	7.30pm	22			14			8
Buildings	7.00pm		26			25		
Grounds	7.45pm		26			25		
Finance	7.30pm	29			28			
Annual Parish Meeting	8.00pm						20	

The Village Voice is written, edited, produced, published by Parish Councillors and delivered by them and other volunteers in order to keep the citizens of Liss informed of the actions of their elected representatives.

### Contacts:

Dick Bowery, Parish Clerk  
Phone & Fax 01730 892823

E-mail: [lissparish@aol.com](mailto:lissparish@aol.com)

Andrea Mann, Assistant Clerk:

E-mail: [lisscouncil@aol.com](mailto:lisscouncil@aol.com)

Website: [www.lissparishcouncil.gov.uk](http://www.lissparishcouncil.gov.uk)