

The latest news from Liss and Liss Forest  
Brought to you by Liss Parish Council

# VILLAGE VOICE

Issue 39 - Autumn 2017

## TIME TO VOTE FOR YOUR LISS NEIGHBOURHOOD PLAN

**FULL NEIGHBOURHOOD PLAN UPDATE**

- see pages 2 & 3

**LISS WINS HAMPSHIRE AND ISLE OF WIGHT  
VILLAGE OF THE YEAR 2017 - see pages 4 & 5**

**UPDATE ON LISS PAVILION**

- see page 6

**LISS CONNECTED RELAUNCH**

- see page 7

**VOTE ON  
THURSDAY 9TH NOVEMBER 2017  
7AM - 10PM  
AT YOUR LOCAL  
POLLING STATION**



## A new face at Liss Parish Council



We are very pleased to welcome Katy O'Malley as a new Parish Councillor - Katy has a young family and is already providing excellent input to Parish Council activities.

Sarah Smith has now been promoted to the position of Joint Parish Clerk, sharing the Parish Clerk role with Dick Bowery. Dick remains as our Responsible Financial Officer.

We are also pleased to welcome Paul Knibbs as our new assistant groundsman.

## Major changes to the Hangers and Forest Ward



The Boundary Commission for England have now published their initial proposed changes to the electoral wards for East Hampshire District Council.

The major change locally is that it is proposed to abolish the Hangers and Forest Ward, with Liss Forest absorbed into Liss Ward, Greatham merged into an enlarged Whitehill Hogmoor ward and Hawkley merged into a new ward with the Tisted villages and Ropley.

Liss Ward (including Liss Forest) will continue to be represented by two district councillors.

Any changes to ward boundaries will take effect from the next full East Hampshire District Council elections in May 2019.

To have your say on these proposals, visit <http://consultation.lgbce.org.uk> and select East Hampshire or email [reviews@lgbce.org.uk](mailto:reviews@lgbce.org.uk)

Consultation closes on 11th December 2017.

## NEIGHBOURHOOD PLAN Now it is your decision!

Since 2014 you may have noticed that the Parish Council have been working with the community to prepare a Neighbourhood Plan. This is the chance to give our view of future development. The planners have to ensure future development conforms to the plan. If we do not have a Neighbourhood Plan it will be left entirely to the South Downs National Park Authority to decide what is right for Liss.

Following extensive consultation the plan has been considered by an independent examiner, approved by the Parish Council and recently the South Downs National Park Authority has agreed it should be put to a final decision.

The decision is now down to a referendum within Liss. **The referendum will take place on 9th November.** It will be just like voting in an election, with the decision based on a simple majority of those voting, and you will be asked whether or not the plan should be accepted as the basis for making planning decisions in Liss.

The plan can be seen online at [lissparishcouncil.gov.uk](http://lissparishcouncil.gov.uk) or at the website for East Hants District Council at [www.easthants.gov.uk/liss-neighbourhood-plan-referendum](http://www.easthants.gov.uk/liss-neighbourhood-plan-referendum) You can view a physical copy in the Parish Office behind the Village Hall.

### What is the plan about?

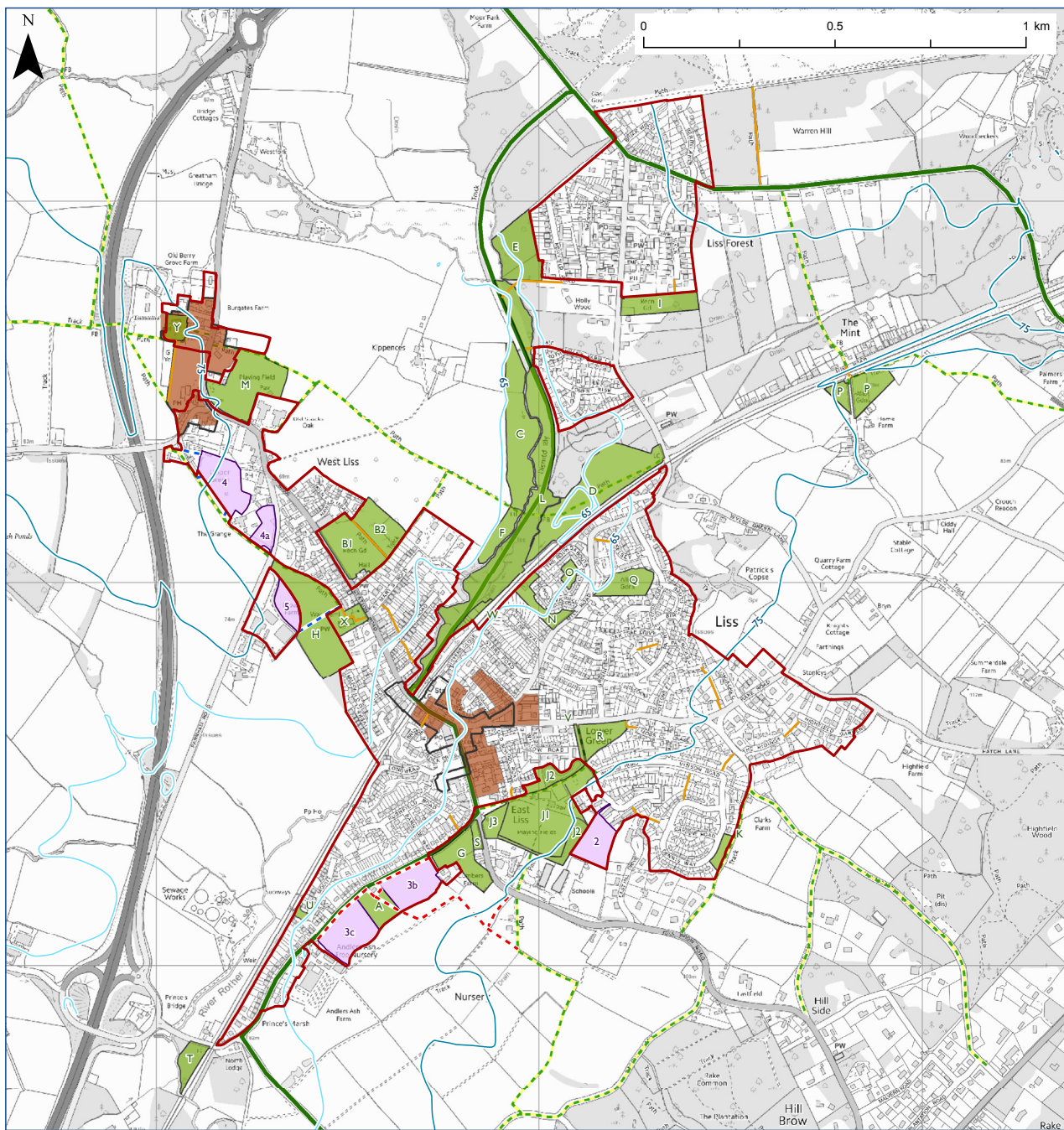
Just to remind you about the plan: we are required to find sites for a minimum of 150 new dwellings by 2028. The plan proposes that 40% of those dwellings should be affordable, to meet local housing needs, and shares the housing between 6 small sites spread around the village rather than on any large sites. The sites are one off Inwood Road, two along Andlers Ash Road, two at West Liss and a site next to Brows Farm on Farnham Road. Sorting out access, design, landscaping and avoiding flooding have been key issues on these sites, each of which has a detailed brief setting out how this can be done.

The plan also provides new green space, protects the existing green space and draws a line around the village to stop development over the next decade spreading into the countryside. Looking after landscape, biodiversity and the design of development across the village are also key parts of the plan.

**NOW ITS UP TO YOU. IT IS IMPORTANT TO VOTE WHETHER OR NOT YOU SUPPORT THE PLAN.**



Liss Neighbourhood Development Plan  
Policies Map (Part 1)  
November 2017



© Crown copyright and database rights 2017 Ordnance Survey 100050083  
Scale at A4 1:10,000

- |                            |                                  |                  |                     |
|----------------------------|----------------------------------|------------------|---------------------|
| Settlement Policy Boundary | <b>Desired Route</b>             | Contour line (m) | Conservation Area   |
| Housing Site               | Andlers Ash towards Liss Schools | 65               | Shipwrights Way     |
| Village Centre             | Other desired route              | 75               | Public Right of Way |
| Local Green Space          | Other path                       |                  |                     |

The map shown above shows the development sites identified in the Liss Neighbourhood Plan. The sites are Inwood Road (2), Andlers Ash Road (3b and 3c), West Liss (4 and 4a) and Brows Farm (5). The map also shows identified areas of local green space.



# LISS WINS HAMPSHIRE AND ISLE OF WIGHT VILLAGE OF THE YEAR 2017



Liss has been named as Hampshire and Isle of Wight village of the year 2017 in an annual competition organised by the Hampshire Association of Local Councils and sponsored by Fuller's brewery.

At the annual awards evening, this year held in the village of the 2016 winners, Lyndhurst in the New Forest, a number of representatives of the Liss community were present to receive the award, together with a cheque for £500 and a bouquet of flowers.

Organiser Steven Lugg, Chief Executive of the Hampshire Association of Local Councils, congratulated all finalists and challenged communities to surpass themselves again in 2018, explaining that this competition is a shining beacon of Localism, where outcomes far outweigh the inputs through local planning and endeavour.

Accepting the Village of the Year 2017 award on behalf of Liss, Keith Budden, Vice-Chairman of Liss Parish Council said "Liss has a claim to fame of being the 'hidden village'. The awards we have won this evening show that while physically we may be hidden, our community spirit is out there loud and clear and emphasise why Liss is such a great place to live, work and thrive."

The award plaque will soon be on permanent display in the village. The bouquet of flowers were offered as a raffle prize at the Macmillan Coffee Morning at the Triangle Centre which raised over £900 for the Macmillan charity.



**TRIANGLE WINS  
BEST VILLAGE FEATURE**

A well deserved winner at the Village of the Year awards was the Triangle Centre which came away with Best Village Feature award for activities which provide for everyone within Liss and Liss Forest.



**CROSSOVER WINS  
INSPIRING PLACES  
AWARD**

The Crossover Youth Centre was also a winner at the Village of the Year awards, being recognised for the great work it does with the young people in our community and winning the Inspiring Places award.



**LISS WINS COMMUNITY  
ENGAGEMENT AWARD**

The strength of community within the whole village of Liss and Liss Forest was recognised by the judges, who in addition to the Village of the Year award, also presented Liss with the Community Engagement award.

# EXCITING NEW PLAY EQUIPMENT AT NEWMAN COLLARD PLAYING FIELDS



On Friday October 20th at 1pm Damian Hinds MP opens a whole new group of play equipment at Newman Collard Playing Fields. If you have not yet seen the new equipment, please pop along and have a look, and while the young people get their first chance to play on the exciting range of activities, parents can take a rest at one of the new picnic benches within the play area.

The new play equipment was planned by a working group engaging with the young people at Liss schools to see what activities they enjoyed and what equipment was best placed to provide those activities.

The project, led by the Newman Collard Playing Fields Trust has become reality thanks to a large grant from Biffa Award, a multi million pound fund that helps to build communities and transform lives through awarding grants to communities and environmental projects across the UK, together with funding from Liss Parish Council and the South Downs National Park.



## NEIGHBOURHOOD PLAN WINS EXCELLENCE IN LOCALISM AWARD

In addition to the awards on the opposite page, Liss also won two Excellence in Localism Awards, one for the Liss Neighbourhood Plan and a second award for the RVS Luncheon Club.





Our long term plan to provide a new pavilion (also incorporating facilities to replace the Scout hut) on the West Liss Recreation Ground continues...

# LISS PAVILION UPDATE

## Plans submitted for planning permission

Action on the new Liss Pavilion continues and the latest plans (which during our consultation process have been seen by over 400 residents), have now been formally submitted for planning permission.

One of our architects drawings of how the new pavilion will look is shown below. You can view all of the plans at <http://www.southdowns.gov.uk/planning/planning-applications/>



We are working to a budget of £555,000. Our architect advises us that our budget is realistic, although we will not know for sure until we go to tender. We have £205,000 saved but will need to borrow around £350,000 from the Public Works Loan Board. To pay back the loan we will have to increase the Council Tax in Liss by a small amount. We are proposing a loan paid back over 20 years, which would mean that each band D household would pay around an extra £10 a year.

We think that is good value, and is probably the only way we can afford to replace the existing facilities. But, we need your views before the Council makes a final decision to seek a loan. We will have more about how you can give us your views on this in the next edition of Village Voice.

## A VICTORIAN THEMED CHRISTMAS EVENT



This year's Christmas Late Night Shopping evening, to be held on Wednesday 6th December from 6pm to 8pm will have a Victorian theme - so feel free to come along in Victorian costume and add to the atmosphere of this regular family event.

In addition to the usual stalls from local charities and groups along Station Road and outside of Tesco, there will also be stalls and attractions in the Triangle Centre, mulled wine at the railway station courtesy of East Hampshire Rail Partnership, carol singing in Station Road, some seasonal activities on the grass triangle near the war memorial, a Santa's grotto, activities in the Village Hall and a couple of surprises on the night!

### \*\*STOP PRESS\*\*

GOOD NEWS - after receiving feedback from the Parish Council, your three EHDC ward councillors and the general public, EHDC has decided to **retain the grass area between Woodbourne Close and The Oval as public open space.**

It promises to be a great evening for the whole family, so if you would like to book a stall, please contact Katie Kempster at the Triangle Centre on 01730 301000 - but be quick, stalls are going fast!

## LISS CONNECTED RELAUNCHES



Liss Connected is a group dedicated to business owners and managers based in Liss, or who live in the village. The group meets every two months at the Triangle Centre, Liss. The September relaunch shown above was attended by our local MP, Damian Hinds, who answered questions from the small business owners present. The next meeting will be on 15th November.

Liss Connected aims to support business and encourage the community to buy local. To learn more about Liss Connected, you can join the Facebook group and follow @LissConnected on Twitter.

## CHANGES TO LISS TRAIN TIMES

South Western Railway, the new operator of rail services serving Liss, have launched a consultation into planned changes to train services to take effect from 9th December 2018.

The proposals include significant changes to peak Liss train services, and also off-peak, with the hourly service to Portsmouth retimed to leave at 30 minutes past the hour and the hourly service to London Waterloo retimed to leave at 46 minutes past the hour.

You can view the consultation online at <http://www.sdu.me/7r> and you need to get your response (if any) submitted by 22nd December 2017.

## VOLUNTEERS NEEDED

Could you spare some time next Spring and Summer to look after our flowers and plants in the village centre?  
If you can help, please let us know by calling 01730 892823

## NEW CALL&GO BUS SERVICES



Call&Go community transport are introducing a number of new bus services serving Liss.

There will be a service on Wednesday mornings and the first and third Saturdays of each month to Petersfield. On the fourth Saturday of the month there will be services to Winchester, Southampton, Portsmouth and Chichester.

Services are available to anyone with a bus pass or blue badge. Call 01420 475759 for bus times and more details.

## LOCK UP YOUR VALUABLES



With Christmas approaching, do not be tempted to leave Christmas presents or other valuables in your car overnight (or even during the day for long periods of time).

Please don't think your valuables will be safe if they are in the car but hidden out of sight, thieves know all of the likely places they are going to be. Keep them safe - take them indoors with you.

# LISS PARISH COUNCIL CALENDAR OF MEETINGS

2017 MEETING DATES	APR	MAY	JUN	JUL	AUG	SEP	OCT	NOV	DEC
COUNCIL - 7.30pm	18	15	19	17		18	16	20	18
PLANNING - 7.30pm	3	2&30	26	24	21	19	17	13	11
HIGHWAYS - 7.30pm		22		10				27	
BUILDINGS - 7.00pm			12			11			4
GROUNDS - 7.45pm			12			11			4
FINANCE - 7.30pm	24			31			6		
LISS PAVILLION DEVELOPMENT COMMITTEE - 7.00pm	12	23	20	18	8	4	3	7	5

All meetings are open to the public to attend. If you wish to do so, you will be very welcome



**We currently have a vacancy for a Parish Councillor**

If you are interested in joining us, please pop into the Parish Office (behind the Village Hall) or call 01730 892823 for more information.

Parish Councillors are unpaid, but the role is very interesting and rewarding.



## SAVE THE TEMPLE INN

The Parish Council (working with the Save Our Temple Inn group) have successfully registered the Temple Inn as an Asset of Community Value.

Red Mist Leisure are currently in advanced negotiations with Fullers Brewery (the current owners of the Temple) and are optimistic that they will be able to begin refurbishment of the Temple Inn in the Autumn of 2017 with the aim of having this great local pub re-opened in time for Christmas.

## WORDSEARCH

```

M O Y C A B E P R I Y S P J V
G I O B W G X D A M E L S U I
I Q K L A F N O H R A U Q E C
T Z J L R C G O I N I Z H Z T
C Q L Z D Y H H J M P S Z A O
P I I S F I S R W O R D H D R
V X I B R P N U I M E C B Z I
E B N W M C R O S S O V E R A
L B U A L Z U B E K T W F Q N
I U H F M J L H J H U M O B E
C L N X M U E G R E C R A Y Z
N C T N E M P I U Q E N A S H
U V Q W I N N E R S D L U E H
O S S I L P K N V M P O D L Y
C C K S A N G D J D Q J O X R
    
```

Can you find these words in the grid above?  
**AWARD CHRISTMAS CLUB COUNCIL  
 CROSSOVER EQUIPMENT HAMPSHIRE LISS  
 LUNCHEON NEIGHBOURHOOD PARISH PLAN  
 PLAY VICTORIAN VILLAGE WINNERS YEAR**

## Contact Us

Parish Council Telephone: 01730 892823  
 Dick Bowery, Joint Parish Clerk:  
[clerk-bowery@lissparishcouncil.gov.uk](mailto:clerk-bowery@lissparishcouncil.gov.uk)  
 Sarah Smith, Joint Parish Clerk:  
[clerk-smith@lissparishcouncil.gov.uk](mailto:clerk-smith@lissparishcouncil.gov.uk)  
 Frances Cook, Administrative Officer:  
[admin@lissparishcouncil.gov.uk](mailto:admin@lissparishcouncil.gov.uk)  
 or call in to our office behind the Village Hall:  
 Office open Monday, Wednesday and Thursday  
 10am - 2pm