

The latest news from Liss and Liss Forest  
Brought to you by Liss Parish Council

# VILLAGE VOICE

Issue 42 - Spring 2019

## PAVILION SPECIAL EDITION PUBLIC OPEN DAYS APRIL 26TH & 27TH 2019

CHECK OUT OUR GREAT NEW HOME  
FOR 1st LISS SCOUTS AND A FANTASTIC  
FACILITY FOR THE WHOLE  
LISS COMMUNITY

BOOKINGS BEING TAKEN NOW  
FOR NEW LISS PAVILION  
WHETHER IT'S A FAMILY PARTY  
OR A REGULAR WEEKLY  
BOOKING, PLEASE  
CONTACT US ON  
01730 892823





# THE NEW LISS PAVILION NOW JUST WEEKS AWAY FROM OPENING

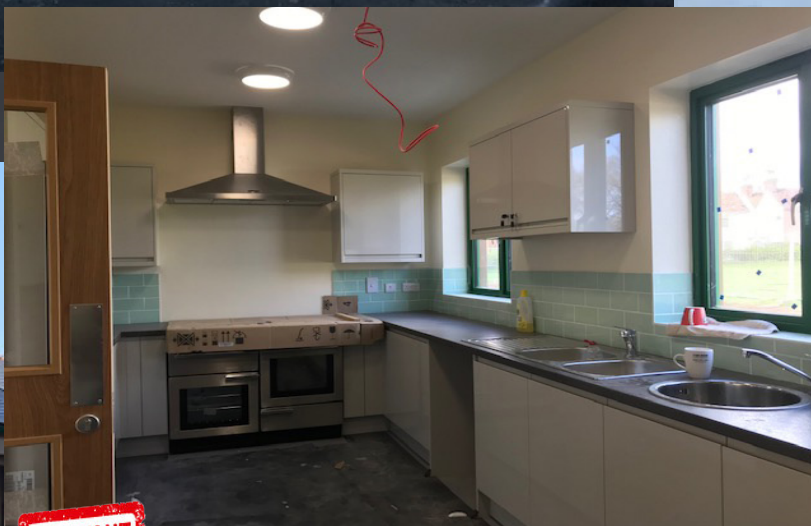
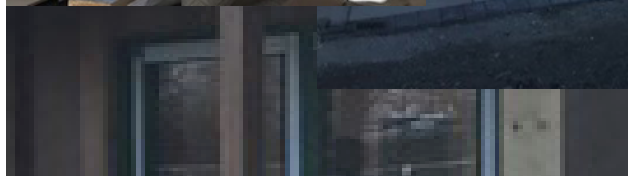


# COULD YOU BE A FUTURE USER OF THE NEW LISS PAVILION? - GET IN TOUCH FOR EARLY RESERVATIONS



*We have worked closely with the 1st Liss Scouts during the planning of the new facilities, as one of the key aims of the Liss Pavilion is to provide the 1st Liss Scouts with a bright new home which will enable their activities to grow and we look forward to welcoming them to their new home.*

*We hope that local football and sports clubs will make use of the great new facilities at the Liss Pavilion and utilise the adjacent Recreation Ground to its full potential.*



*If you are a member of a community group, a local sports team, a playgroup or simply looking for a great venue for a party or wedding reception, or you are looking for a venue for a corporate presentation or training day, we are now starting to plan a calendar of bookings for the hall, so please get in touch with our clerk, Sarah Smith on 01730 892823 or by email at [clerk-smith@lissparishcouncil.gov.uk](mailto:clerk-smith@lissparishcouncil.gov.uk) and Sarah will be pleased to discuss availability with you.*





# PAVILION SNEAK PEEK

We are extremely pleased that we are now only a few weeks away from the opening of the new Liss Pavilion. While the official opening is set for 17th May 2019, we are very pleased to be able to invite residents to two 'sneak peek' early viewings of the new facilities.

These early viewings are to be held on **Friday 26th April from 4pm - 7pm** and **Saturday 27th April 2019 from 10am - 1pm**. No booking is necessary, please just turn up and one of our councillors or staff will be pleased to show you around.

We would remind visitors that the building is still in the final stages of construction and we would therefore ask that you wear appropriate clothing and footwear. For Health and Safety reasons, please follow the instructions of councillors and/or staff and do not venture into any parts of the building which are marked as No Access.

We hope that as many residents as possible will take advantage of this opportunity to view the Pavilion.

## New Pavilion Facilities

- Main room provides 113 sq metres of meeting space.
- Quiet room for breakout sessions/quiet sessions/small meetings
- Purpose built sound system, speakers and amplifier
- Smart TV & microphone for training and presentations
- Hearing loop in main hall
- Wifi throughout the building
- Fully equipped kitchen with a commercial dishwasher
- Serving hatches from the kitchen to both the main hall and to the verandah
- Double doors from the main hall opening onto verandah overlooking the playing field
- Football Association specification changings rooms including male & female referee & disabled changing facilities
- Parking & cycle stands
- Accessible toilet and baby change facilities
- Fully accessible throughout building

We are pleased to announce the Queen's representative, **Nigel Atkinson**, Lord Lieutenant of Hampshire and President of Hampshire Scouts has agreed to perform the **official opening** of the new Liss Pavilion on **Friday 17th May 2019 at 4pm**.



We hope that as many residents as possible will come along and join us in celebrating the official opening of this long awaited new multi-use community facility.

## Contact Us

Parish Council Telephone: 01730 892823

Sarah Smith, Parish Clerk:  
clerk-smith@lissparishcouncil.gov.uk

Liz Ford, Responsible Finance Officer:  
rfo@lissparishcouncil.gov.uk

Frances Cook, Assistant Clerk:  
assistantclerk@lissparishcouncil.gov.uk

or call in to our office behind the Village Hall:  
Office open Monday, Wednesday and Thursday  
10am - 2pm



facebook.com/LissParishCouncil/



@LissCouncil

